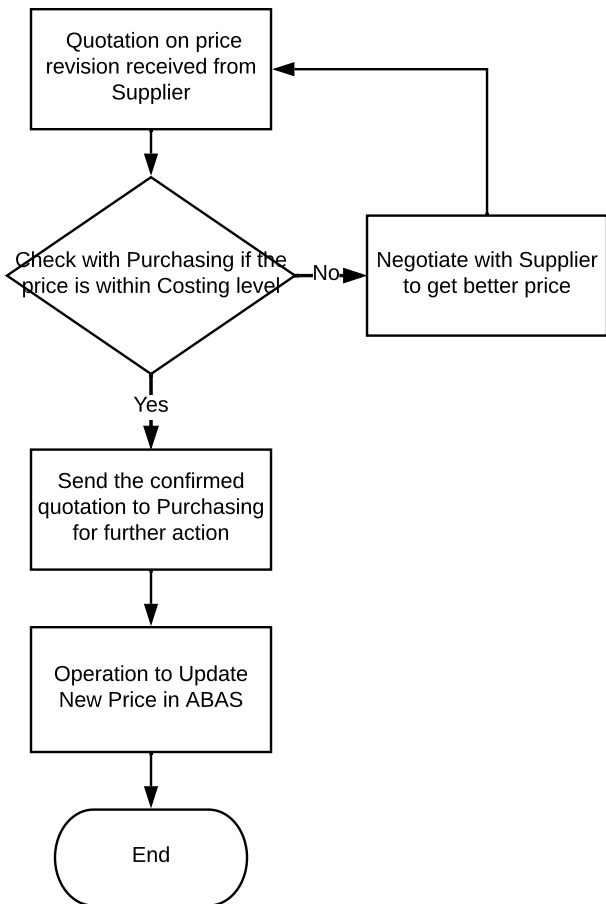
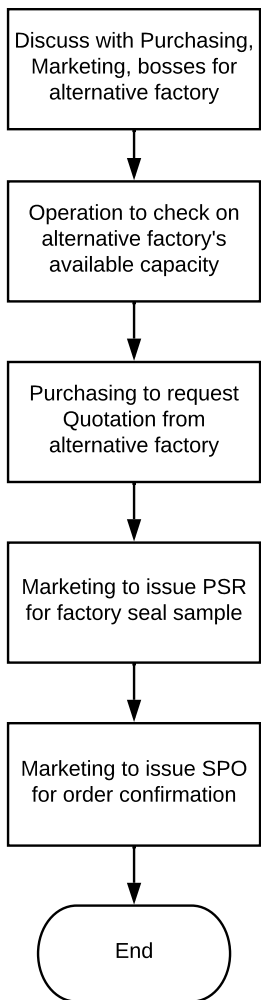


WHEN OPERATION REQUESTS FOR CHANGES

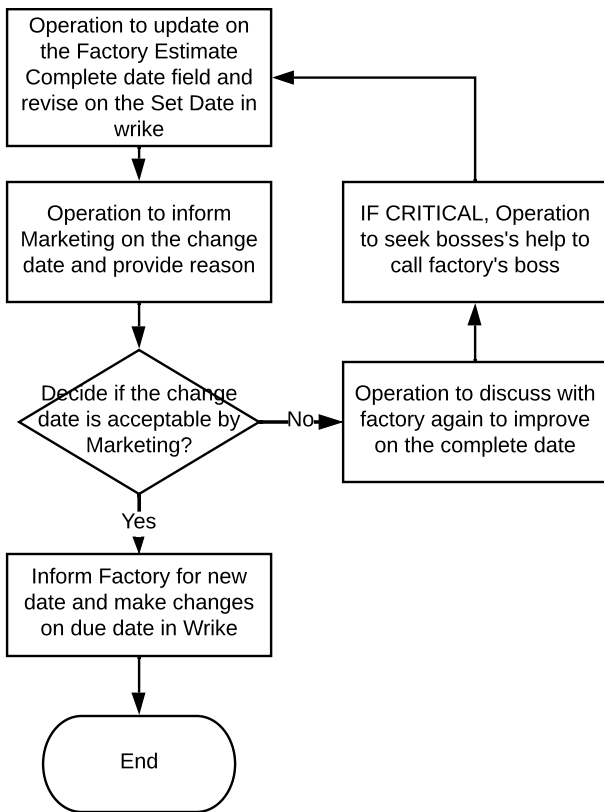
CHANGE PRICE ON RAW MATERIAL  
(mainly on price increase)



CHANGE FACTORY DURING  
REPEATING ORDERS (when factory  
unable to meet customer's requested  
delivery date before SPO issued / price  
increase tremendously)

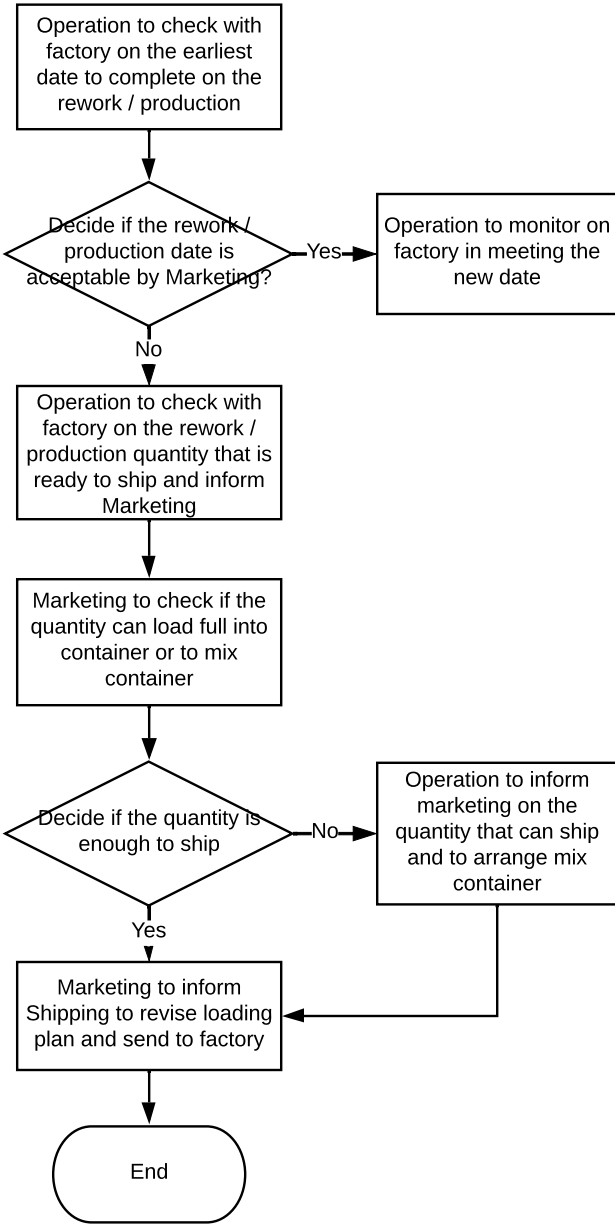


CHANGE FACTORY COMPLETE DATE



WHEN OPERATION REQUESTS FOR CHANGES

CHANGE QUANTITY WHEN QUALITY  
ISSUE HAPPEN / CHANGE LOADING  
PLAN IF GOODS INCOMPLETE



CHANGE WHEN FACTORY PRODUCED  
WRONG COLOUR AND WANTED TO  
REDO THE SPO

